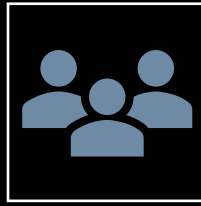


Wrap up

Professor Samer Bagaeen



Professor of Planning & Resilient Systems at the University of Kent



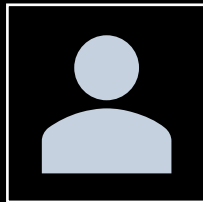
Technical Director with the Environmental Planning team at Arcadis



Elected Councillor at Brighton and Hove since 2019 (re-elected 2023)



Set up the Brighton Planning School in 2008 and the Kent Planning School in 2018



Chartered Town Planner & Design Council Expert



Trustee of the Royal Town Planning Institute (2023-2025) and Chair of the RTPI's International Committee in 2023



Worked with the Rockefeller Foundation's global resilience programme as an Associate Director



In Kent, managed Cultural Co-location, a Creative Estuary project funded by the Cultural Development Fund (2020-2023) and now a Board Member for Creative Estuary (2023-2026)

Camille Martel

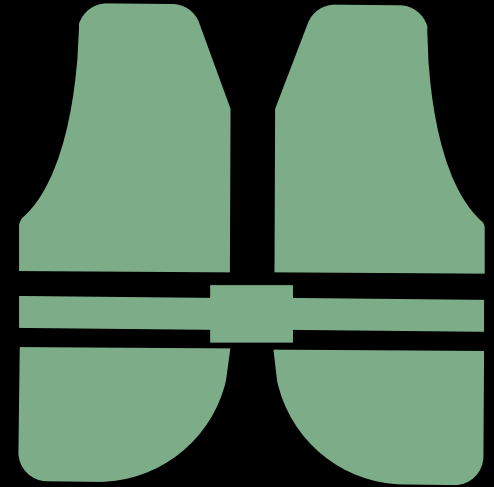
Small boats crossings – Search & Rescue (SAR) France-UK

Stop the Boats both an English & French priority (political optics versus ability to deliver in practice)

Border as a practice – look at where border controls take place

Pull factor theory – search & rescue detrimental to efforts to dissuade migration (surely this is the case in a number of places)

What is the EU role? Why is this only a French-British problem to solve?



**EU Action Plan for the
Central
Mediterranean en.pdf
f (europa.eu)**

EU ACTION PLAN FOR THE CENTRAL MEDITERRANEAN

2022 irregular arrivals to the European Union have increased across all routes confirming the need to find sustainable and structural European solutions to our common challenges based on the comprehensive approach set out in the New Pact on Migration and Asylum, including renewed action on the external dimension of migration.

Adopting the Pact in all its aspects remains the main priority. In the framework of the gradual approach adopted earlier this year under the French Presidency, the Czech Presidency is advancing the discussions on solidarity balanced along with responsibility, ahead of the Justice and Home Affairs Council of 8 December 2022.

The October Justice and Home Affairs Council had addressed the recent evolutions in the Western Balkans migratory route, which has also recently seen a large increase in migratory movements. The discussion focused, in particular, on the visa policy of the Western Balkan region and the key areas for cooperation with the Western Balkan partners, identifying common initiatives to be deployed to step up European action.

Latest events have put a spotlight on the **Central Mediterranean route** where over 90 000 migrants and refugees arrived in 2022 departing mainly from Libya and Tunisia, and originating primarily from Egypt, Tunisia, and Bangladesh an increase of over 50% in comparison to 2021. Most of these arrivals reached the European Union after hazardous journeys, and search and rescue operations at sea.

The European Union has been addressing this issue over the past years, including through targeted outreach towards third countries (i.e., Tunisia, Egypt, and Bangladesh) to strengthen cooperation on the fight against smuggling and targeted actions along the routes (i.e., Niger) through the reinforcement of border and coast guard capacities, enhanced



Robin

A comparative approach to cross-border cooperation

In the dynamics of channel crossings...., logistics flows are critical

The role of elected politicians (in Brittany)

Nathan

The impact of Interreg collaboration and its impact on local authorities in the region (financial contributions)

Interreg 2 Seas

Kent County Council

The role of the elected leaders and those that are civil servants or technical advisors

The different mandates for counties, French départements, etc.

Connected Communities

Value of EU Grant to Kent County Council - €748,856

Name of funding programme - [Interreg Channel Programme](#)

Start and end dates - May 2019 to April 2023

This €5.09 million 4-year project is co-financed with European Regional Development Funding through the Interreg France Channel England Programme. The project has received €3.5 million ERDF Funding through the Interreg France Channel England Programme.

Through the Connected Communities initiative, a new Social Prescribing Plus service will be tested in several pilot areas in Kent. This will be delivered by the Public Protection Group which has significant experience working on the front line with residents, in particular vulnerable residents, and within communities, for example tackling anti-social behaviour.



Key benefits for Kent

A new Social Prescribing operating model will be trialled and tested in Kent pilot localities.

Opportunities for Kent to benefit from shared learning from European partners.

Kent overwhelmingly votes to leave the EU

🕒 24 June 2016



- Only Tunbridge Wells (inland) voted to stay
- Loss of competence of county councils
- The conversion of country councils into regional powerhouses as part of a devolution deal

FRAMING KENT'S FUTURE

OUR COUNCIL STRATEGY 2022-2026

LEADER'S FOREWORD 03

KENT'S STRATEGIC CONTEXT 04

OUR RESPONSE 10

CORPORATE EQUALITY OBJECTIVES 12

PRIORITIES FOR KENT 14

PRIORITY 1: LEVELLING UP KENT 16

PRIORITY 2: INFRASTRUCTURE FOR COMMUNITIES 28

PRIORITY 3: ENVIRONMENTAL STEP CHANGE 40

PRIORITY 4: NEW MODELS OF CARE AND SUPPORT 50

HOW WE WILL KNOW WE ARE ON TRACK 60

- [Framing Kent's Future - Our Council Strategy 2022-2026](#)

Island States must bolster resilience to existential climate threat



Limits of transnational cooperation in the Caribbean

- Extremely fragmented area
- Governments across the Caribbean will need to re-think how they work with the cruise industry in a more cohesive and integrated way.
- Close attention must also be paid to improving local infrastructure and to facilitating the involvement of local people
- Maintaining biodiversity in the area

[Strengthening Resilience and Ending Vulnerability in Small Island Developing States | Joint SDG Fund](#)

[Making Small Island Developing States more climate resilient | UNOPS](#)

Published on June 14, 2021



+ Credits

Strengthening Resilience and Ending Vulnerability in Small Island Developing States

An aerial photograph of a white speedboat moving through dark blue water, leaving a large, white, turbulent wake. The boat is positioned in the lower right quadrant of the frame. The text is overlaid on the right side of the image.

Dynamics of cooperation in the Mediterranean



Horizon Europe encourages
Euro-Mediterranean cooperation
in Research & Innovation

April 2023



"The Mediterranean Initiative under Horizon Europe addresses our shared political priorities: health, renewable energy and climate change. Through international cooperation in R&I, we will improve the resilience of the Euro-Mediterranean region to current and future socio-economic challenges".

Mariya Gabriel Commissioner for Innovation, Research, Culture, Education and Youth

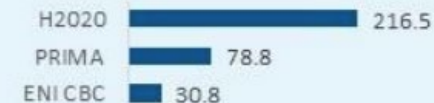
**Health
Energy
Climate Change**

More comprehensive & more inclusive?



Climate change

EU contribution, EUR mn



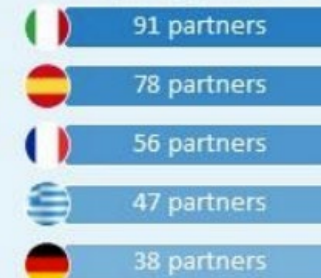
Number of projects



Leading partners



Participating partners EU



Participating partners non-EU



Madeira

Açores

Islas Canarias

The Atlantic Arc as a geopolitical space
The importance of a territorial approach
and civil society integration

Southern
and Eastern

West Wales
and The Valleys

Lancashire
Merseyside

Greater Manchester

Cheshire

East Wales

Gloucestershire
Wiltshire and Bristol
Bath area

Isles of Scilly

Bretagne

Pays de la Loire

Poitou-Charentes

Galicia

Principado
de Asturias

Aquitaine

País
Vasco

Norte

Cantabria

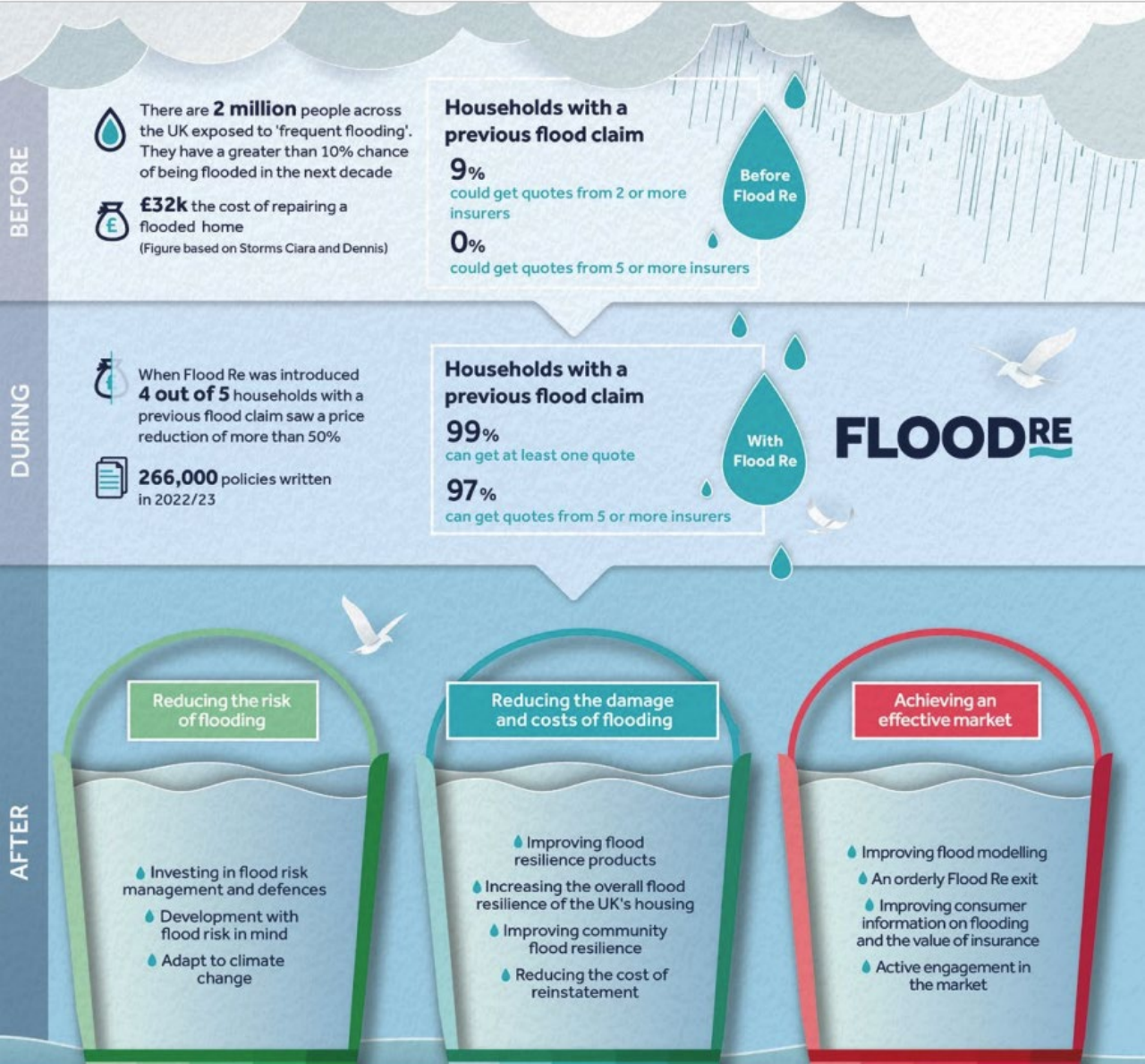
Comunidade
Foral de

Centro

A person wearing a bright red jacket and dark pants is walking across a rocky, light-colored shore. In the background, a large, rugged mountain with patches of snow or light-colored rock rises against a blue sky. A clear blue lake is visible, and its surface reflects the person and the surrounding landscape. The overall scene is a serene, high-altitude natural setting.

Insurance for resilience

How insurers can promote resilience
in the face of climate change



[20689 Flood Re Transition Plan report 2023 2.pdf \(floodre.co.uk\)](#)

Roundtables

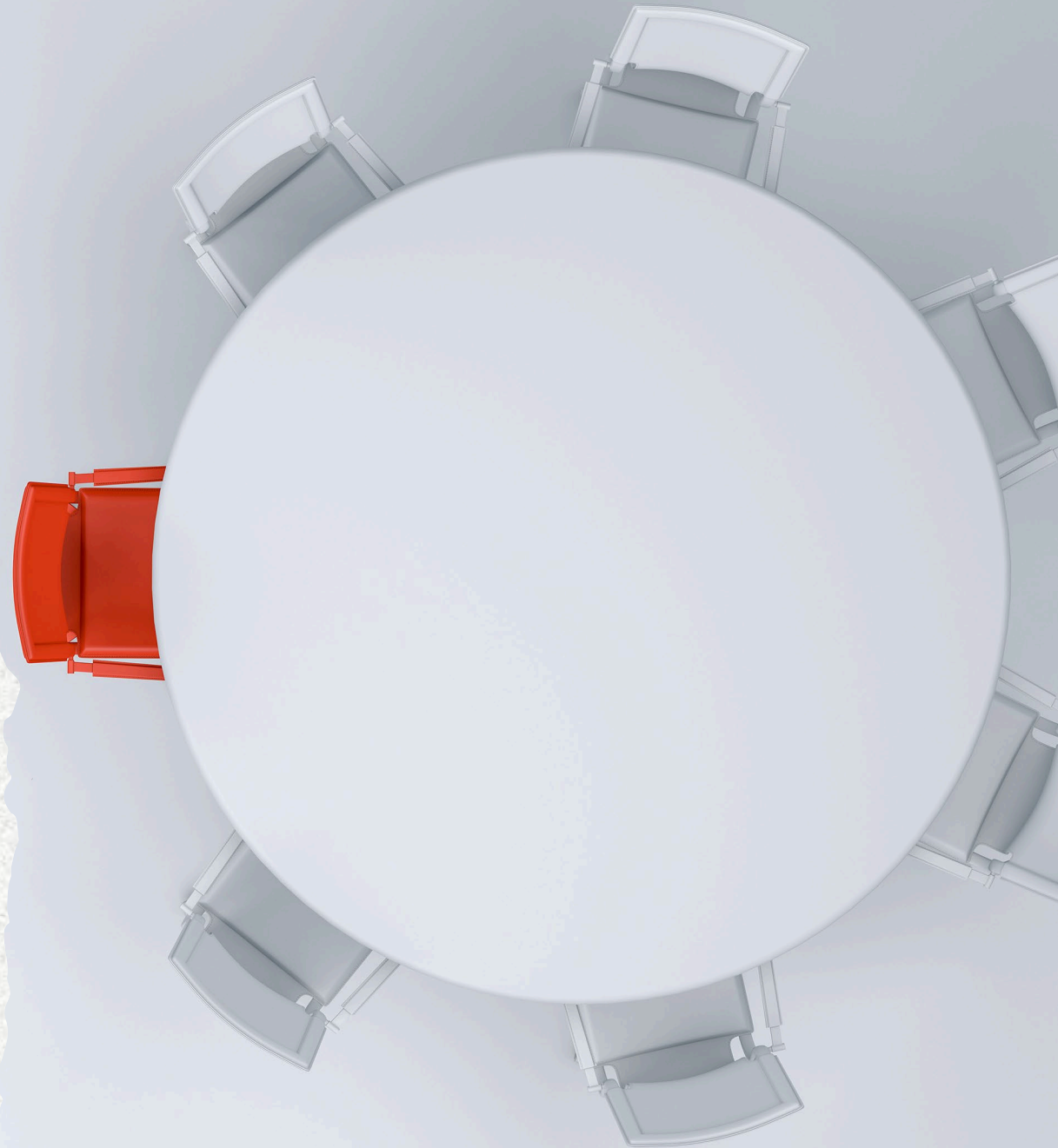
Active government decision: waive entry visas for the Rugby World Club

Millions of British and French nationals cross the borders / there is also complementarity

Trust between nations critical

Work going on in Kent at the Port of Dover using data/tech to enable speedier crossings (EU digitalization of ports also mentioned)

Political boundaries + collaborations / functional boundaries + collaborations



The image shows the front cover of the book 'Borderland' by Phil Hubbard. The cover features a photograph of a beach with white cliffs in the background and several dark, abstract sculptures of animals on the sand. The title 'Borderland' is written in large white letters at the top. Below it, the subtitle 'Identity and belonging at the edge of England' is written in smaller white letters. At the bottom left, the author's name 'Phil Hubbard' is printed in white. The entire cover is partially obscured by a black, torn-edge graphic that separates it from the back cover on the right.

Borderland

Identity and belonging at the
edge of England

Phil Hubbard

Merci!

Prof. Samer Bagaeen
s.bagaeen@kent.ac.uk

The image shows the back cover of the book 'Borderland' by Phil Hubbard. It features the same photograph of a beach with white cliffs and dark sculptures as the front cover. The title 'Borderland' is written in large white letters at the top. Below it, the subtitle 'Identity and belonging at the edge of England' is written in smaller white letters. At the bottom right, the author's name 'Hubbard' is printed in white. The entire cover is partially obscured by a black, torn-edge graphic that separates it from the front cover on the left.

Borderland

Identity and belonging at the
edge of England

Hubbard